



# GMT MONTHLY MEMBERSHIP PROGRESS REPORT

Results as of: 5/31/2024

Multiple District 21

LOCATION: ARIZONA

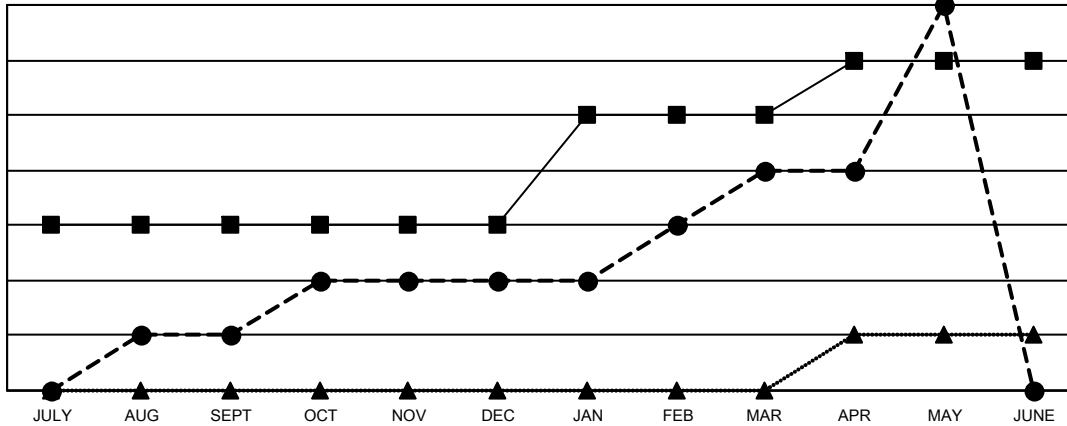
GMT: OPEN

GMT CA 1

| Clubs                 |               |           |               |
|-----------------------|---------------|-----------|---------------|
| RESULTS FOR 2023-2024 |               |           |               |
| QUARTER               | NEW CLUB GOAL | NEW CLUBS | DROPPED CLUBS |
| JULY/AUG/SEPT         | 3             | 1         | 0             |
| OCT/NOV/DEC           | 0             | 1         | 3             |
| JAN/FEB/MAR           | 2             | 2         | 0             |
| APR/MAY/JUNE          | 1             | 3         | 1             |

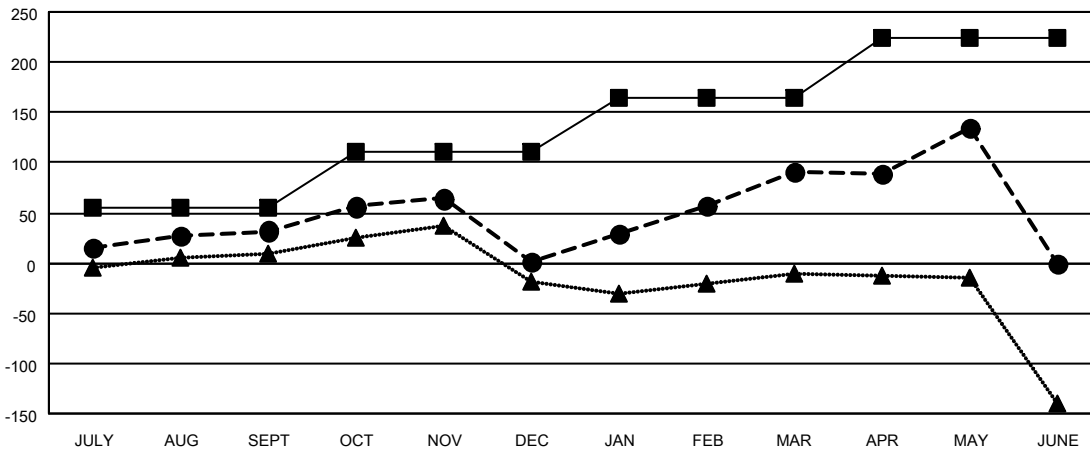
| Members               |                        |                      |  |
|-----------------------|------------------------|----------------------|--|
| RESULTS FOR 2023-2024 |                        |                      |  |
| QUARTER               | MEMBER GROWTH NET GOAL | MEMBER GROWTH ACTUAL | DROPPED MEMBERS ACTUAL (including transfers) |
| JULY/AUG/SEPT         | 55                     | 140                  | 89   |
| OCT/NOV/DEC           | 55                     | 87                   | 109  |
| JAN/FEB/MAR           | 55                     | 164                  | 61   |
| APR/MAY/JUNE          | 60                     | 164                  | 76   |

GOALS AND ACTUAL NEW CLUBS CUMULATIVE



- - CURRENT YEAR GOALS FOR NEW CLUBS
- - CURRENT YEAR ACTUAL NEW CLUBS
- ▲ - LAST YEAR ACTUAL NEW CLUBS

GOALS AND ACTUAL MEMBERS CUMULATIVE



- - MEMBER GROWTH NET GOAL
- - MEMBER GROWTH ACTUAL
- ▲ - LAST YEAR MEMBERSHIP ACTUAL

|  |   |  |
|--|---|--|
| DROPPED CLUBS: 4   | 72 CLUBS OF 109 ADDED 1 OR MORE NEW MEMBERS               | <b>GENDER DISTRIBUTION</b><br>MALE 1,308 (51.74%)<br>FEMALE 1,220 (48.26%) |
| <b>DROPPED MEMBERS</b><br>DECEASED 48<br>CLUB CANCELLED 21<br>OTHER 266<br>TOTAL 335 | <a href="#">CLICK HERE FOR CUMULATIVE MEMBERSHIP DATA</a> | TOTAL FAMILY UNIT MEMBERS 644<br>FAMILY MEMBERS PAYING HALF DUES 343       |